

MANUAL CLAMPS

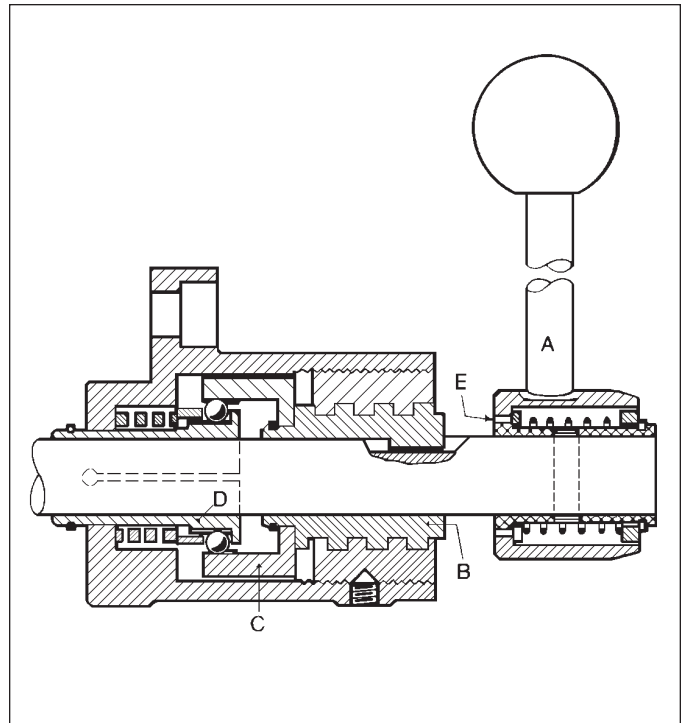
Variable-Stroke Plunger Action



SERIES **FO/FL/G/F**

Designed for quick action where there are wide size variations from piece to piece or where the opening and closing motions need to be long. In operation the plunger is simply pushed forward until it contacts the workpiece. The locking lever (A) is then rotated clockwise which locks the plunger by means of the collet (D) and simultaneously advances the plunger to apply clamping force to the work. This "power travel" is based on 180° of handle rotation. The actual plunger "power travel" is 2.5 mm for the models with 8 mm plunger diameter, 3 mm for models with 12 mm plungers, and 4 mm for models with 16 mm plunger diameter.

The cutaway drawing shows a model whose locking lever is integral with the plunger. Long stroke models, whose plungers are sold separately in a choice of lengths, have the locking lever attached directly to the threaded sleeve. In all models, except the handwheel types, a spline (E) permits easy repositioning of the locking lever.



Advantages and Features:

- Fast advance & clamp
- Quick release & retraction
- Stroke lengths up to 500 mm (approx. 20")
- Positive clamping at any point in the stroke
- Holding capacities to 2000 lbs.
- Compact size
- Wide range of models

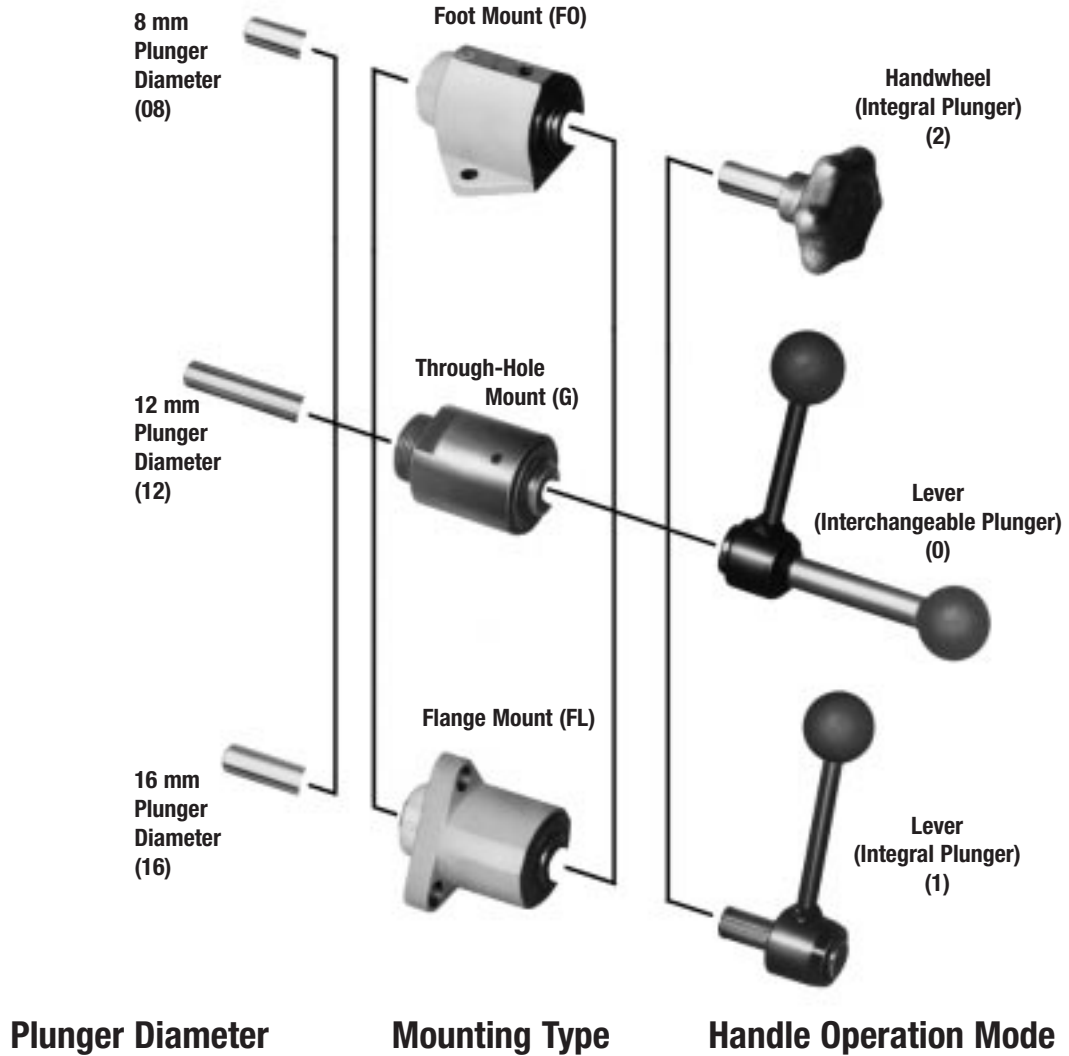
Model Code & Ordering Information

Example: **FO** - **16** **1** / **60**

Mounting Type	Plunger Diameter (mm)	Operation Mode	Stroke
FO: Foot Mount FL: Flange Mount G: Through-Hole Mount F: Block Mount	08 = 8mm 12 = 12mm 16 = 16mm	0 = Lever (Interchangeable, Optional Plungers) 1 = Lever (Integral Plunger) 2 = Handwheel (Integral Plunger)	40 = 40mm 45 = 45mm 60 = 60mm -- = 100 to 500mm (Depending on optional plunger)

13 Combinations of Plunger Diameter, Mounting Type and Operation Mode.

CLAMP ANATOMY



MODELS **FO-082/40, G-082/40**

- Holding capacity:** 300 lbs. maximum
- Weight:** 11 oz. (approx.)
- Plunger diameter:** 8mm
- Plunger tapped thread:** M5
- Stroke:** 40mm Maximum
- Power travel:** 2.5mm

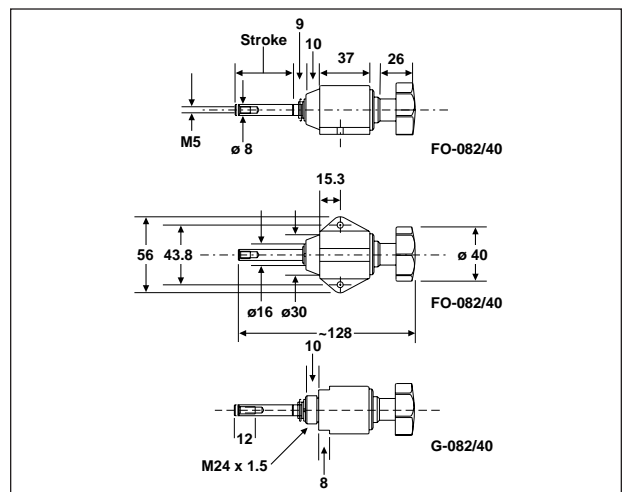
40082

Model FO-082/40
Foot Mount/Hand Wheel



42082

Model G-082/40
Through-Hole Mount/Hand Wheel



Note: See page 85 for Plunger Options.

MANUAL CLAMPS

Variable-Stroke Plunger Action

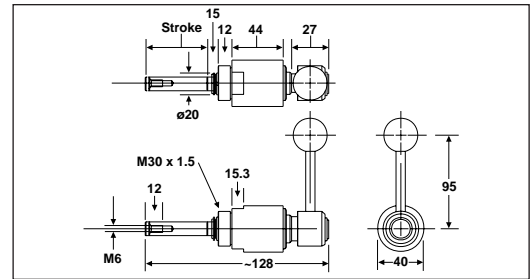


MODEL G-121/45

Holding capacity: 600 lbs. (approx.)
Weight: 1 lb., 5 oz.
Plunger diameter: 12mm
Plunger tapped thread: M6
Stroke: 45mm Maximum
Power travel: 3mm



42121
 Model G-121/45
 Through-Hole Mount



MODELS FL-120/--, FL-121/45

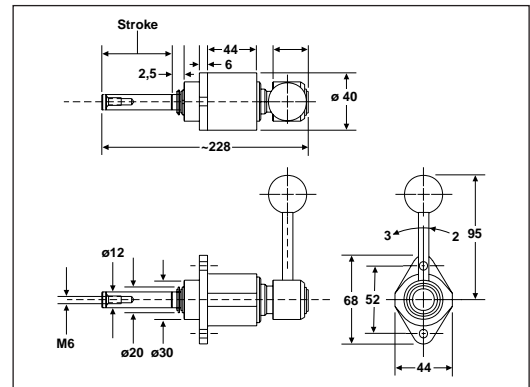
Holding capacity: 600 lbs. (approx.)
Weight: FL-120/-- (less plunger): 1 lb., 2 oz.
 FL-121/45: 1 lb., 6 oz.
Plunger diameter: 12mm
Plunger tapped thread: M6
Stroke: FL-120/--: 100mm, 200mm, 300mm
 FL-121/45: 45mm Maximum
Power travel: 3mm



41120
 Model FL-120/--
 Flange Mount/Interchangeable Plunger



41121
 Model FL-121/45
 Flange Mount



MODELS FO-120/--, FO-121/45, FO-122/45

Holding capacity: 600 lbs. (approx.)
Weight: FO-120/-- (less plunger): 1 lb., 4 oz.
 FO-121/45 & FO-122/45: 1 lb., 5 oz.
Plunger diameter: 12mm
Plunger tapped thread: M6
Stroke: FO-120/--: 100mm, 200mm, 300mm
 FO-121/45 & FO-122/45: 45mm Maximum
Power travel: 3mm



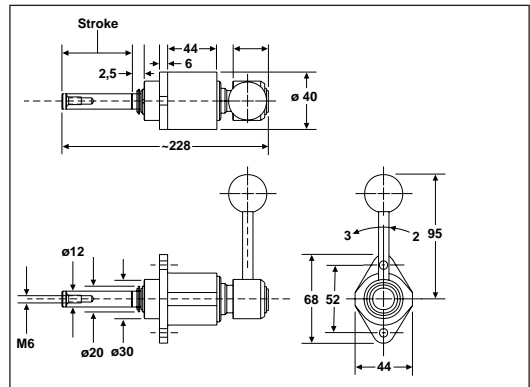
41122
 Model FO-120/--
 Foot Mount/
 Interchangeable Plunger



41125
 Model FO-121/45
 Foot Mount



40122
 Model FO-122/45
 Foot Mount



MODELS FL-160/--, FL-161/60

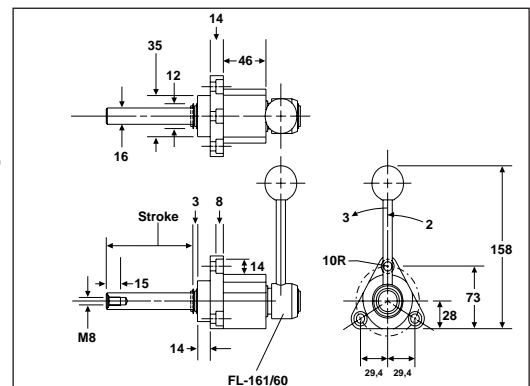
Holding capacity: 2000 lbs.
Weight: FL-160/-- (less plunger): 2 lbs., 9 oz.
 FL-161/60: 3 lbs., 2 oz.
Plunger diameter: 16mm
Plunger tapped thread: M8
Stroke: FL-160/--: 100mm, 200mm, 300mm, 400mm, 500mm
 FL-161/60: 60mm Maximum
Power travel: 4mm



41160
 Model FL-160/--
 Flange Mount/
 Interchangeable Plunger



41161
 Model FL-161/60
 Flange Mount



Note: See page 85 for Plunger Options.

MANUAL CLAMPS

Variable-Stroke Plunger Action



DE-STA-CO
A DOVER RESOURCES COMPANY

MODELS FO-160/--, FO-161/60

Holding capacity: 2000 lbs.
Weight: FO-160/-- (less plunger): 2 lbs., 12 oz.
 FO-161/60: 3 lbs., 7 oz.
Plunger diameter: 16mm
Plunger tapped thread: M8
Stroke: FO-160/-- (less plunger): 100mm, 200mm, 300mm
 60mm, 4mm

Power train

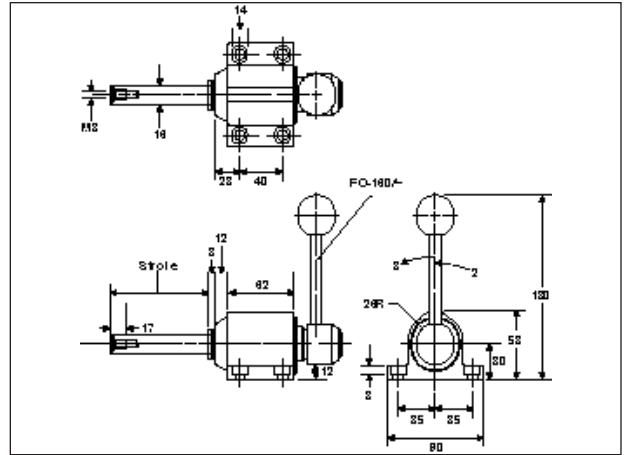
40160

Model FO-160/--
Foot Mount/
Interchangeable Plunger



40161

Model FO-161/60
Foot Mount

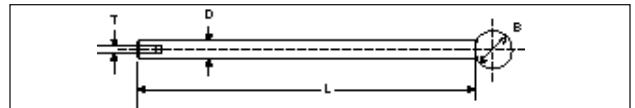
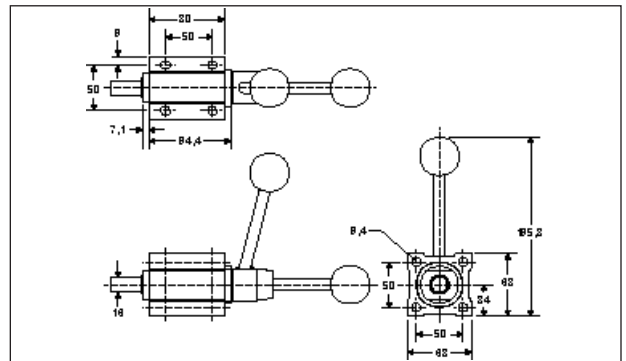


MODEL F-160/--

Holding capacity: 2000 lbs.
Weight: F-160/-- (less plunger): 3 lb., 8 oz.
Plunger diameter: 16mm
Plunger tapped thread: M8
Stroke: F-160/--: 100mm, 200mm, 300mm, 400mm, 500mm

40162

Model F-160/--
Block Mount/
Interchangeable Plunger



Plungers For Models	Part No.	EDP No.	Stroke	Dimensions (Metric)				Weight
				L	D	B	T	
FL-120/-- FO-120/--	12/100	44121	100 mm	198	12	29	M6	0.2 kg.
	12/200	44122	200 mm	298	12	29	M6	0.3 kg.
	12/300	44123	300 mm	400	12	29	M6	0.4 kg.
FL-160/-- FO-160/-- F-160/--	16/100	44161	100 mm	215	16	33	M8	0.4 kg.
	16/200	44162	200 mm	315	16	33	M8	0.55 kg.
	16/300	44163	300 mm	416	16	33	M8	0.7 kg.
	16/400	44164	400 mm	515	16	33	M8	0.85 kg.
	16/500	44165	500 mm	613	16	33	M8	1 kg.

Thrust Pads For Models	Part No.	EDP No.	Dimensions (Metric)				Plunger Size
			T	A	L	B	
FO-082/40, G-082/40	K508	44508	M5	6	8	9	8 mm
FL-120/--, FL-121/45 FO-120/--, FO-121/45 FO-122/45, G-121/45	K612	44612	M6	7	10	12.5	12 mm
F-160/--, FL-160/-- FL-160/60, FO-160/-- FO-161/60	K816	44816	M8	10	14	14.5	16 mm

