

# MANUAL CLAMPS

## Carver T-Slot Style

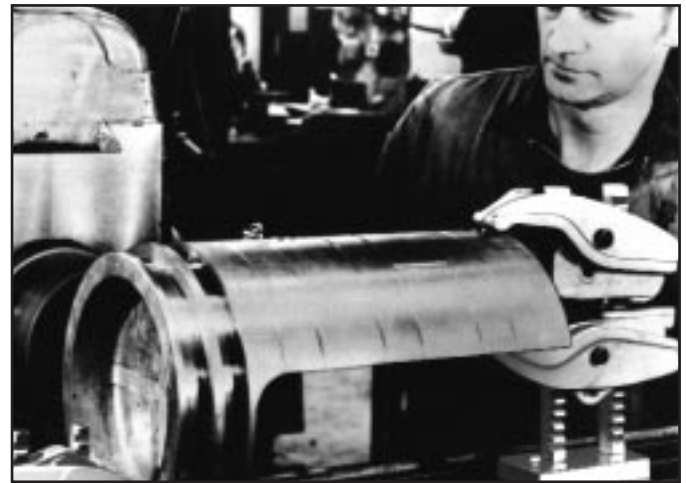
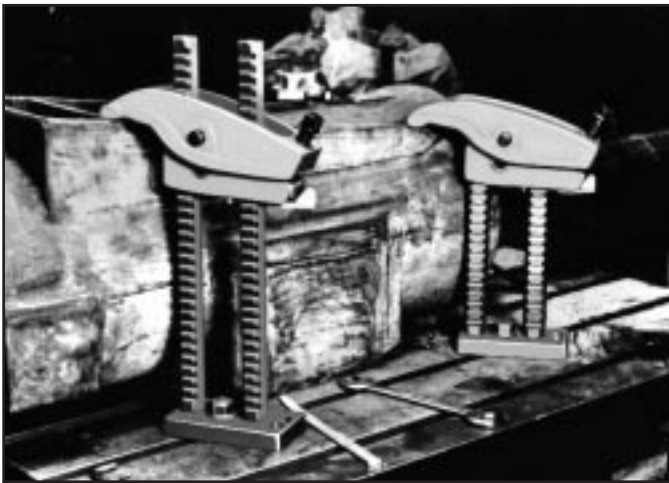


### Quality Solutions For Your Special Manual Clamping Requirements

DE-STA-CO/Carver clamps are offered in five different styles to quickly, economically, and safely meet a wide range of manual clamping requirements. The T-Slot, Buttress Style and Edge Grip clamps are designed for workpiece holding on T-Slot tables of machining centers or milling machines. The T-Slot and Buttress Style clamps are also ideally suited for die clamping, since they eliminate the need for step or riser blocks and can be used for multiple set-ups, further reducing set-up times. The Bar Style and "C" Style clamps are well suited to meet a wide variety of special workholding requirements. One typical application is welding, but the clamps can also be used to hold workpieces on drill presses, band saws, and other machine tools.



### T-SLOT STYLE



**Safety** - No loose parts. Clamp and base are one unit. Higher clamping force holds parts more securely...and safely.

**Speed** - The clamp head adjusts much faster than an operator can select proper size spacers and bolts. Benefit: Cuts set-up time by as much as 80%, reduces machine downtime and offers more rapid loading and unloading.

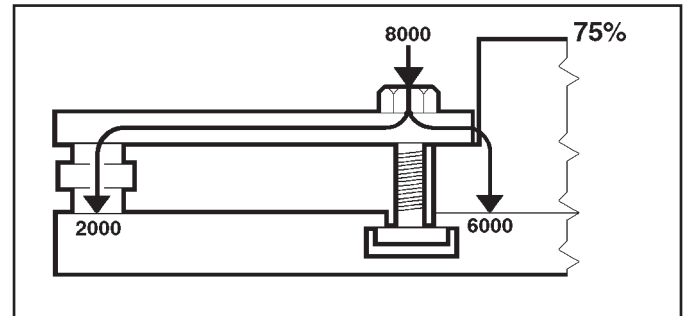
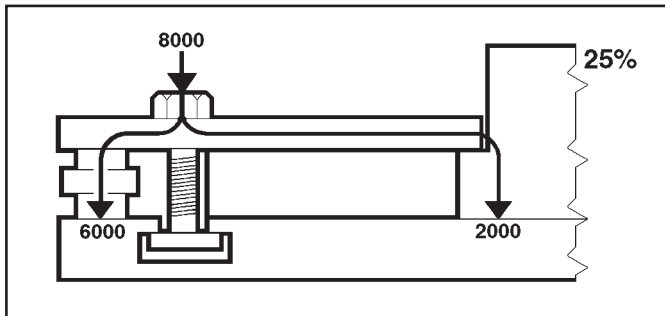
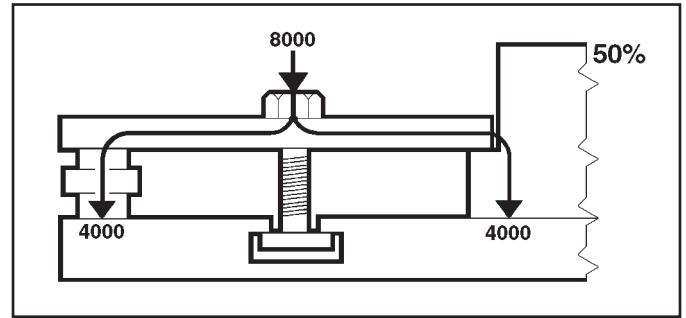
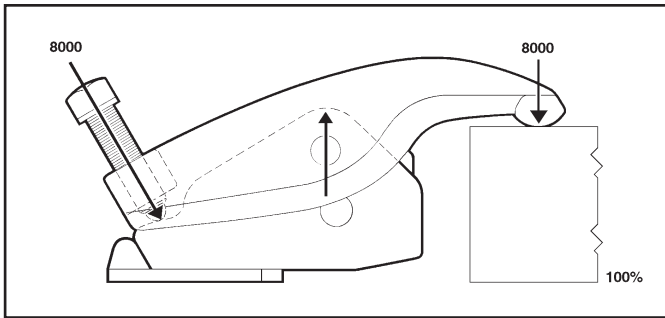
**Economy** - Tool tip technology and digital control have reduced machining time. Why lose these advantages on long set-up times? T-Slot clamps can reduce set-up time by as much as 80%. Benefit: Money saved.

**Ease of Operation** - Loosen adjusting screw and release safety catch to adjust height instantly.

**Versatility** - Selection of bases gives clamping heights from 0" to 60". Two or more heads can be used on one base to position and hold down as well as support – ideal for fine height adjustment during set-up. Also eliminates riser blocks.

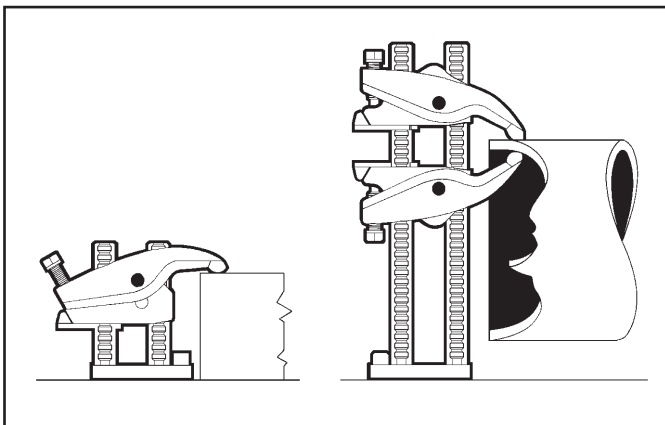
# MANUAL CLAMPS

Carver T-Slot Style

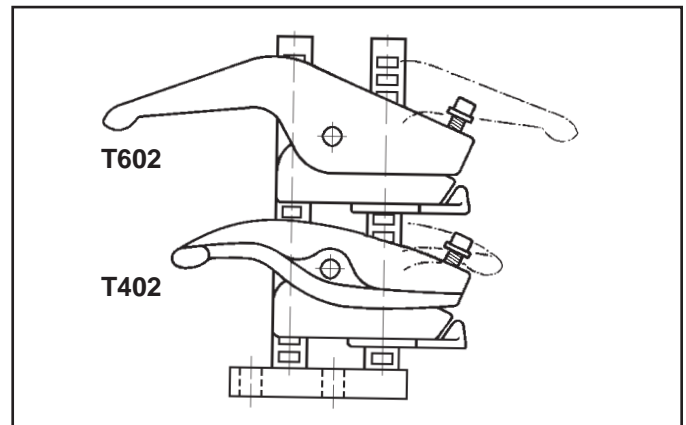


These patented clamps provide rapid height adjustment and positive holding. They are designed with a single-unit clamp head and base, providing up to 8,000 lbs. of positive holding capacity for workpieces up to 60" high. The design applies 100% of the screw force directly onto the workpiece... far more than any strap clamp arrangement. What's more, there's no searching for the correct riser block height. The DE-STA-CO/Carver Clamp is one single assembly. There are no loose parts.

When setting up, the safety lock on the back is released and the clamp lifted on the base to the desired height. When the clamp screw is turned, 100% of the force is transmitted to the workpiece. Backing off the clamp adjusting screw and releasing the safety lock and lifting the clamp head makes for rapid job changeover.



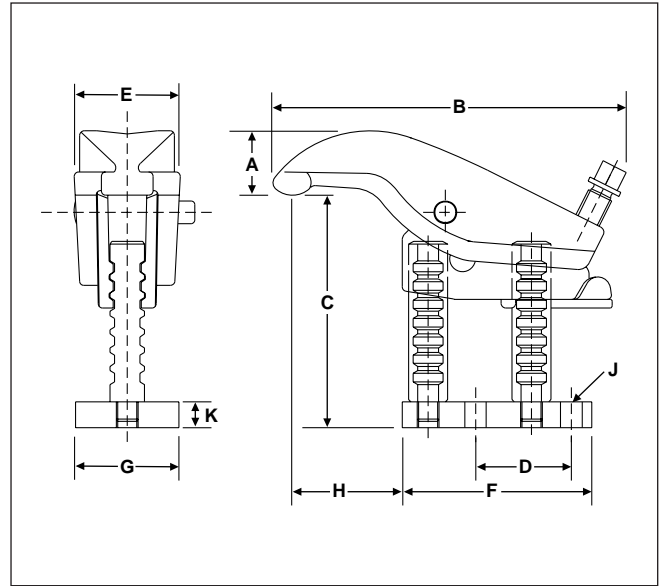
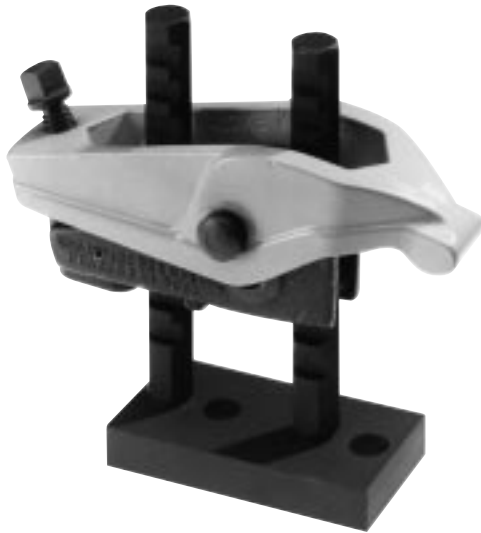
**Ideal for use as manual die clamps. Eliminates the need for step blocks or riser blocks.**



**The T402 and T602 can be reversed on their bases to give added reach.**

# MANUAL CLAMPS

## Carver T-Slot Style



Model No.	EDP No.	Consisting of		Holding Capacity	Weight	Dimensions									
						A	B	C (Range)	D	E	F	G	H	J	K
T400-4	54004	400-2	400- 4-1	5000 lbs.	4.00 lbs.	1.09	6.31	1" - 4"	2.12	1.03	3.78	2.00	1.44	0.53	.63
T400-6	54006	400-2	400- 6-1	5000 lbs.	4.20 lbs.	1.09	6.31	1" - 6"	2.12	1.03	3.78	2.00	1.44	0.53	.63
T400-8	54008	400-2	400- 8-1	5000 lbs.	4.60 lbs.	1.09	6.31	2.5" - 8"	2.12	1.03	3.78	2.00	1.44	0.53	.63
T600-4	56004	600-2	400- 4-1	3500 lbs.	4.80 lbs.	1.50	7.88	.5" - 4"	2.12	1.91	3.78	2.00	2.94	0.53	.63
T600-6	56006	600-2	400- 6-1	3500 lbs.	5.10 lbs.	1.50	7.88	.5" - 6"	2.12	1.91	3.78	2.00	2.94	0.53	.63
T600-8	56008	600-2	400- 8-1	3500 lbs.	5.40 lbs.	1.50	7.88	2" - 8"	2.12	1.91	3.78	2.00	2.94	0.53	.63
T402-6	54026	402-2	402- 6-1	8000 lbs.	14.00 lbs.	1.69	9.63	0" - 6"	2.81	3.00	5.50	3.00	2.56	0.66	.75
T402-12	54212	402-2	402- 12-1	8000 lbs.	17.70 lbs.	1.69	9.63	0" - 12"	2.81	3.00	5.50	3.00	2.56	0.66	.75
T402-18	54218	402-2	402- 18-1	8000 lbs.	19.40 lbs.	1.69	9.63	6" - 18"	2.81	3.00	5.50	3.00	2.56	0.66	.75
T402-24	54224	402-2	402- 24-1	8000 lbs.	20.00 lbs.	1.69	9.63	12" - 24"	2.81	3.00	5.50	3.00	2.56	0.66	.75
T402-30	54230	402-2	402- 30-1	8000 lbs.	25.80 lbs.	1.69	9.63	18" - 30"	2.81	3.00	5.50	3.00	2.56	0.66	.75
T402-36	54236	402-2	402- 36-1	8000 lbs.	28.70 lbs.	1.69	9.63	24" - 36"	2.81	3.00	5.50	3.00	2.56	0.66	.75
T402-42	54242	402-2	402- 42-1	8000 lbs.	32.00 lbs.	1.69	9.63	30" - 42"	2.81	3.00	5.50	3.00	2.56	0.66	.75
T402-48	54048	402-2	402- 48-1	8000 lbs.	34.60 lbs.	1.69	9.63	36" - 48"	2.81	3.00	5.50	3.00	2.56	0.66	.75
T402-54	54254	402-2	402- 54-1	8000 lbs.	36.80 lbs.	1.69	9.63	42" - 54"	2.81	3.00	5.50	3.00	2.56	0.66	.75
T402-60	54260	402-2	402- 60-1	8000 lbs.	40.80 lbs.	1.69	9.63	48" - 60"	2.81	3.00	5.50	3.00	2.56	0.66	.75
T602-6	56026	602-2	402- 6-1	5500 lbs.	16.00 lbs.	2.75	12.13	0" - 6"	2.81	3.53	5.50	3.00	4.50	0.66	.75
T602-12	56212	602-2	402- 12-1	5500 lbs.	19.80 lbs.	2.75	12.13	0" - 12"	2.81	3.53	5.50	3.00	4.50	0.66	.75
T602-18	56218	602-2	402- 18-1	5500 lbs.	21.60 lbs.	2.75	12.13	6" - 18"	2.81	3.53	5.50	3.00	4.50	0.66	.75
T602-24	56224	602-2	402- 24-1	5500 lbs.	24.30 lbs.	2.75	12.13	12" - 24"	2.81	3.53	5.50	3.00	4.50	0.66	.75
T602-30	56230	602-2	402- 30-1	5500 lbs.	28.00 lbs.	2.75	12.13	18" - 30"	2.81	3.53	5.50	3.00	4.50	0.66	.75
T602-36	56236	602-2	402- 36-1	5500 lbs.	30.90 lbs.	2.75	12.13	24" - 36"	2.81	3.53	5.50	3.00	4.50	0.66	.75
T602-42	56242	602-2	402- 42-1	5500 lbs.	34.20 lbs.	2.75	12.13	30" - 42"	2.81	3.53	5.50	3.00	4.50	0.66	.75
T602-48	56248	602-2	402- 48-1	5500 lbs.	36.80 lbs.	2.75	12.13	36" - 48"	2.81	3.53	5.50	3.00	4.50	0.66	.75
T602-54	56254	602-2	402- 54-1	5500 lbs.	39.00 lbs.	2.75	12.13	42" - 54"	2.81	3.53	5.50	3.00	4.50	0.66	.75
T602-60	56260	602-2	402- 60-1	5500 lbs.	43.00 lbs.	2.75	12.13	48" - 60"	2.81	3.53	5.50	3.00	4.50	0.66	.75