

MANUAL CLAMPS

Heavy-Duty Hold-Down Production Clamps



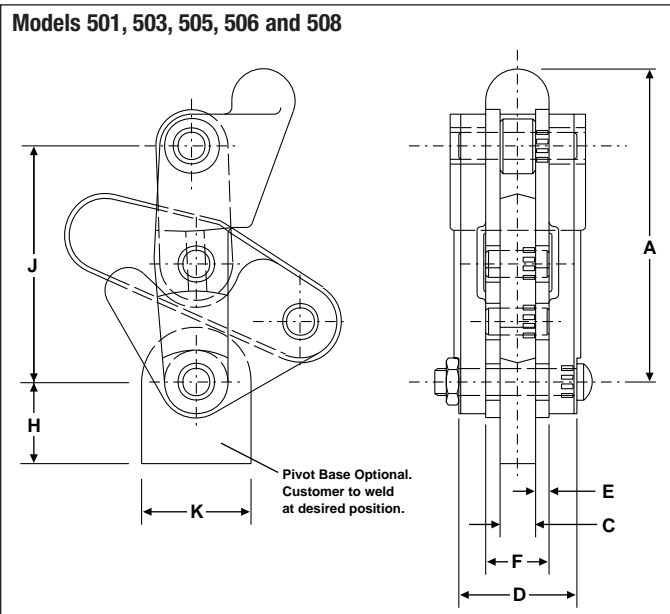
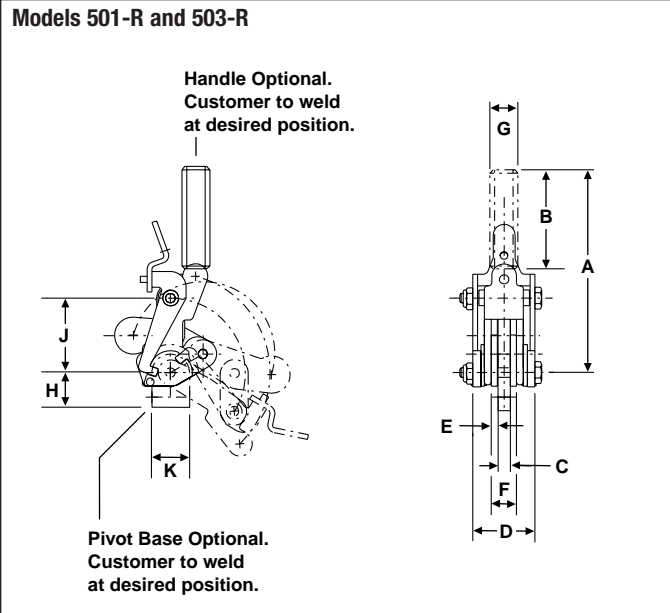
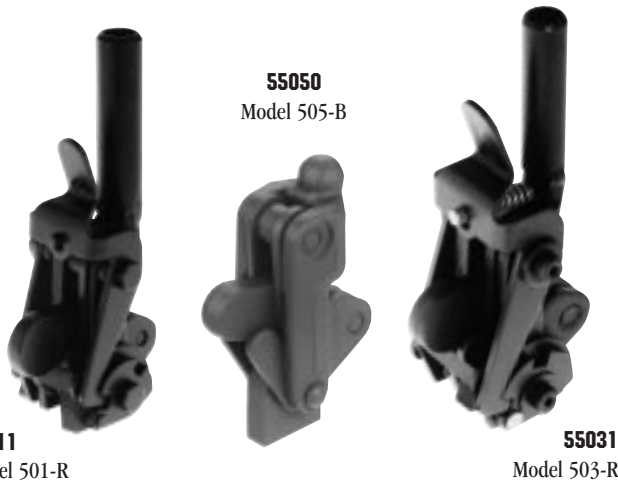
SERIES 500

Our Heavy-Duty Clamps offer full flexibility of installation. Designed for heavy-duty automotive and farm-implement tooling, the unique construction with heat treated bushings installed in the outside members of linkage, spread the bearing load over a greater length for long service. Combined with the forged components, close tolerance, hardened and ground pivot pins and pivot bolt, they provide precision repeatability in a compact package.

Five sizes of basic linkage are available which allows the designer complete flexibility to position the base, clamp arm and handle, and weld them to suit the application.

DE-STA-CO now offers Heavy-Duty Clamps with Toggle-Lock Plus™ safety technology. We have taken two of our most popular Heavy-Duty Production Clamps, Models 501 and 503, and added a locking release lever for improved safety (501-R and 503-R). The locking release lever helps ensure that the over-center locking condition is maintained. In order to open each clamp, the locking lever must first be released.

Depending on mounting conditions, the Models 501-R and 503-R can also be locked in the open position.



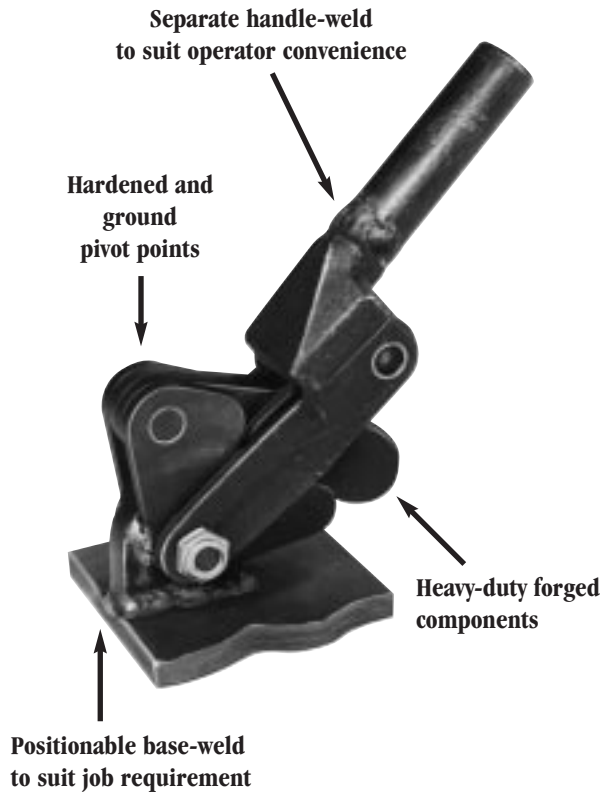
Model No.	EDP No.	with pivot base	with pipe handle	with long base	Holding Capacity	Weight	Handle Moves	Bar Opens	Dimensions									
									A	B	C	D	E	F	G	H	J	K
501	55010	B	H	—	600 lbs.	.50 lbs.	210°	210°	2.16	—	.25	1.25	.13	.50	—	.50	1.50	.75
501-R	55011	B	H	—	600 lbs.	.75 lbs.	123°	182°	4.16	2.00	.25	1.25	.13	.50	.56	.50	1.50	.75
503	55030	B	H	LB	2000 lbs.	1.50 lbs.	132°	210°	3.44	—	.39	1.25	.19	.75	—	.78	2.50	1.13
503-R	55031	B	H	LB	2000 lbs.	1.75 lbs.	118°	175°	6.44	3.00	.39	1.25	.19	.75	.88	.78	2.50	1.13
505	55050	B	H	LB	3000 lbs.	2.00 lbs.	147°	210°	4.25	—	.48	1.81	.19	.88	—	1.11	3.25	1.50
506	55060	B	H	LB	6000 lbs.	3.00 lbs.	132°	210°	5.19	—	.63	2.25	.25	1.13	—	1.30	4.00	2.00
508	55080	B	H	—	8000 lbs.	4.00 lbs.	135°	210°	6.63	—	.75	2.63	.31	1.38	—	1.31	5.25	2.75

MANUAL CLAMPS

Heavy-Duty Hold-Down Production Clamps

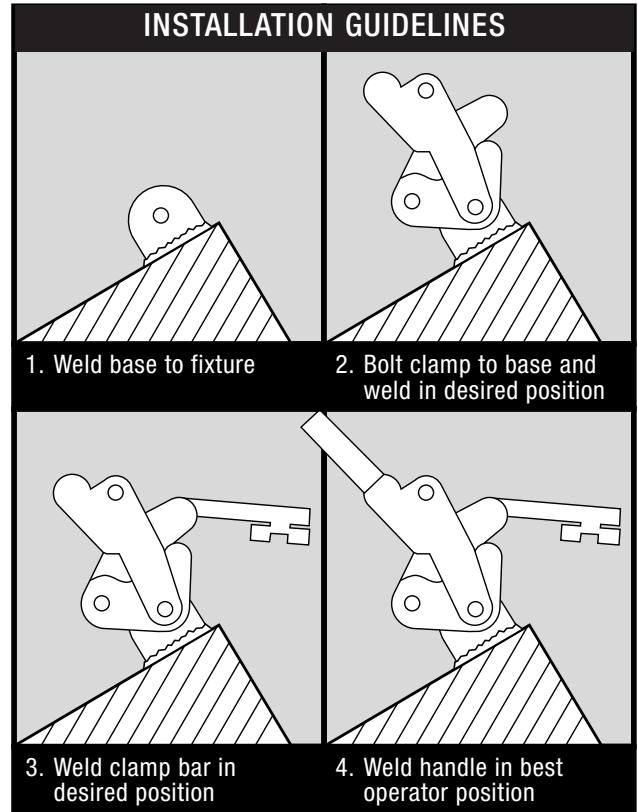


SERIES 500







Opens a full 210° to completely clear the work area

The combination of mounting flexibility and full opening capacity make these clamps extremely versatile for heavy-duty holding jobs such as auto body fixtures and similar applications.



Model Code & Ordering Information

Example: 501 - B - POL - PL - H

Model No.	Base Options	Hold-Open Options	Pre-Load Options	Pipe-Handle Option
501	B= Pivot Base. Permits bolting the clamp linkage to the base accessory and welding it in a position to suit the application.	LSC= Spring Clip and Urethane Bumper Assembly. Holds the clamp open under spring tension only.	PL= Pre-load Nut and Set Screw. Can maintain the arm in a registered closed position. The clamp locks against itself to avoid accidental opening in applications where no load is placed on the clamp arm.	H= Pipe Handle. Not Welded.
503		POL= Positive Open Latch. Prevents accidental clamp closing before workpiece is in position.		
505	FB= Base with two dowel holes and one screw hole. Can be added to selected models and welded into set positions.	R= Toggle-Lock Plus locking release lever. Can positively maintain the open and closed position of the clamp.		
506				
508	LB= Long Base. Permits tongue-mounting the linkage to a tang and bolting it in place.			
				

Note: Not all Models available with all options. See page 79 for availability.

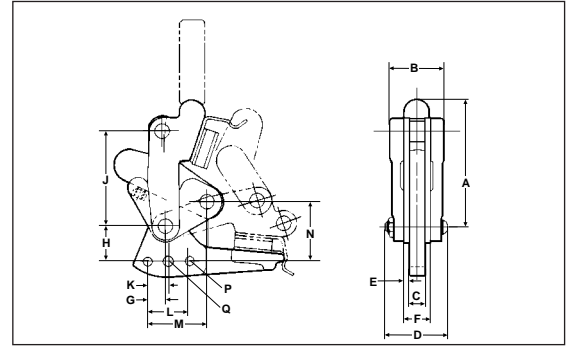
MANUAL CLAMPS

Heavy-Duty Hold-Down Production Clamps



SERIES 500-LSC Option

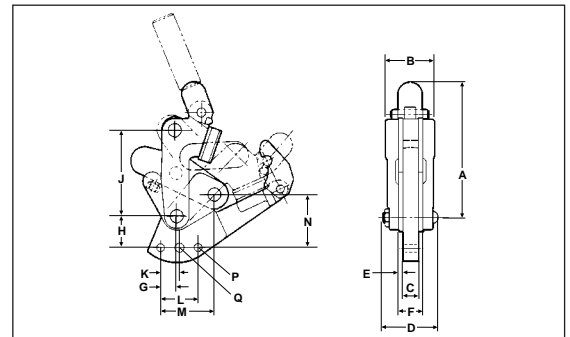
A spring clip and urethane bumper assembly (LSC) is also available in Model 506 and 508 to hold the clamp arm open under spring tension only.



Model No.	Dimensions (LSC Option - With spring clip and bumper)														
	A	B	C	D	E	F	G	H	J	K	L	M	N	P	Q
506-LSC-HP	5.38	2.25	.63	2.63	.25	1.13	.77	1.45	4.00	.88	1.75	2.50	2.45	.38	.44
508-LSC-HP	6.75	2.63	.75	3.09	.31	1.38	.61	1.67	5.25	1.00	2.00	2.88	2.99	.50	.44

SERIES 500-POL Option

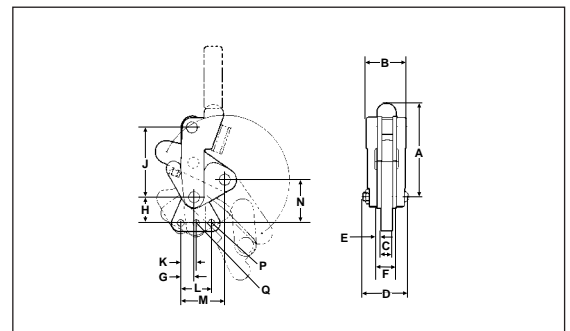
Models 505, 506 & 508 are also available with a positive open latch (POL) device to prevent accidental clamp closing before the workpiece is in position.



Model No.	Dimensions (POL Option - With positive open latch device)														
	A	B	C	D	E	F	G	H	J	K	L	M	N	P	Q
505-POL-HP	5.06	1.81	.48	2.19	.19	.88	.75	1.13	3.25	.75	1.50	2.16	1.94	.31	.44
506-POL-HP	6.31	2.25	.63	2.63	.25	1.13	.77	1.45	4.00	.88	1.75	2.50	2.45	.38	.44
508-POL-HP	7.75	2.63	.75	3.09	.31	1.38	.61	1.67	5.25	1.00	2.00	2.88	2.99	.50	.44

SERIES 500-FB Option

Models 505, 506 and 508 are also available with (FB) base, with two dowel holes and one screw hole. Can be added and welded into set positions.



Model No.	Dimensions (FB Option - With dowel hole mounting base)														
	A	B	C	D	E	F	G	H	J	K	L	M	N	P	Q
505-FB	4.25	1.81	.48	2.19	.19	.88	.75	1.13	3.25	.75	1.50	2.16	1.94	.31	.44
506-FB	5.38	2.25	.63	2.63	.25	1.13	.77	1.45	4.00	.88	1.75	2.50	2.45	.38	.44
508-FB	6.75	2.63	.75	3.09	.31	1.38	.61	1.67	5.25	1.00	2.00	2.88	2.99	.50	.44