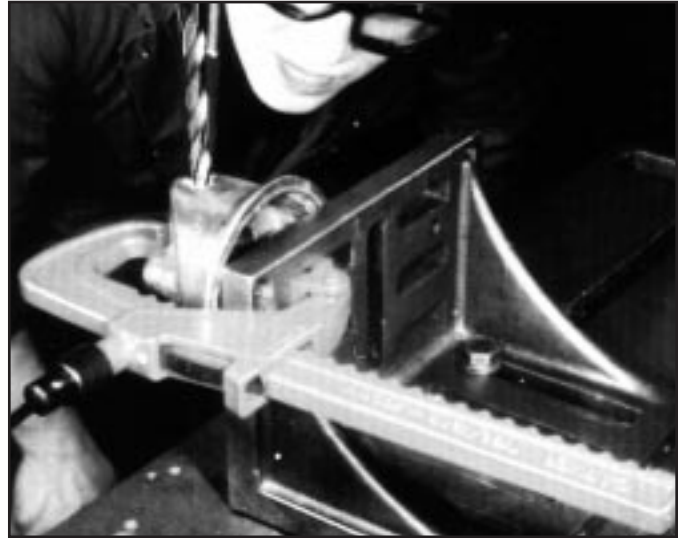
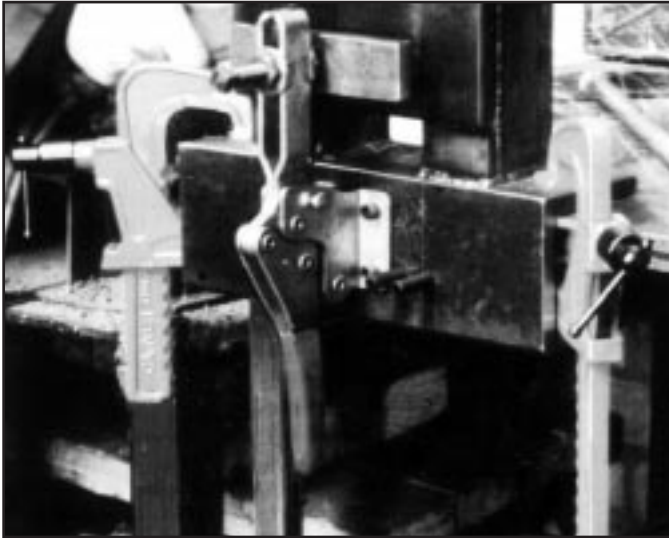


MANUAL CLAMPS

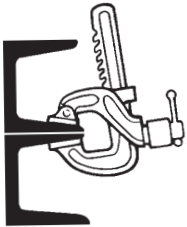
Carver "C" Style



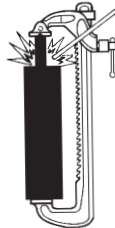
These DE-STA-CO/Carver clamps represent a great improvement over the ordinary "C" Clamp. Because they are made up of two major components – frame and moveable jaw – they are sturdier than the common style "C" Clamp. Work is held securely by both jaws, not one jaw and a screw.

The T-screw on these clamps is short, shielded and positioned away from the work area. This means that it

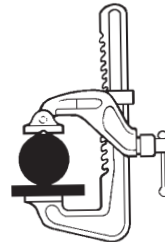
is sturdier and protected from weld spatter and debris. Set-up is fast and easy, requiring just a quick adjustment of the sliding jaw and a short manual turn of the tightening screw – no cheater bar is needed. These clamps will last much longer in service as well as providing a more positive grip on the work.



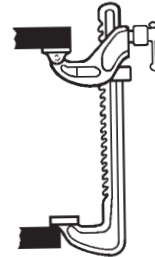
No obstruction from long screw.
Ideal for structural steel fabrication.



Unaffected by weld spatter.
Screw is shielded and out of work area.



Holds rounds to flats.
Limited movement of moveable jaw pad and grooved face ensure positive grip on round objects.



Will operate in reverse.
Jaw may be reversed to give spreading action.

Safety

Capacity ratings are very conservative and give a large factor of safety.

Speed

Quick adjustment by sliding jaw and then only a short turn of the tightening screw assembly.

Power

Short, fine pitch thread for maximum grip. Only hand-tightening is required.

Versatility

Squeezes and spreads, or locates by reversing jaws. Ideal for welding.

Long Life

Rugged construction gives excellent service under the toughest conditions. Protective epoxy finish prolongs life.

MANUAL CLAMPS

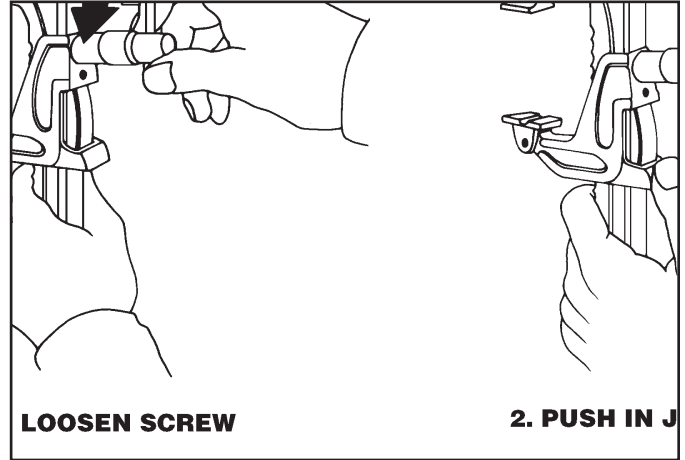
Carver "C" Style



APPLICATIONS



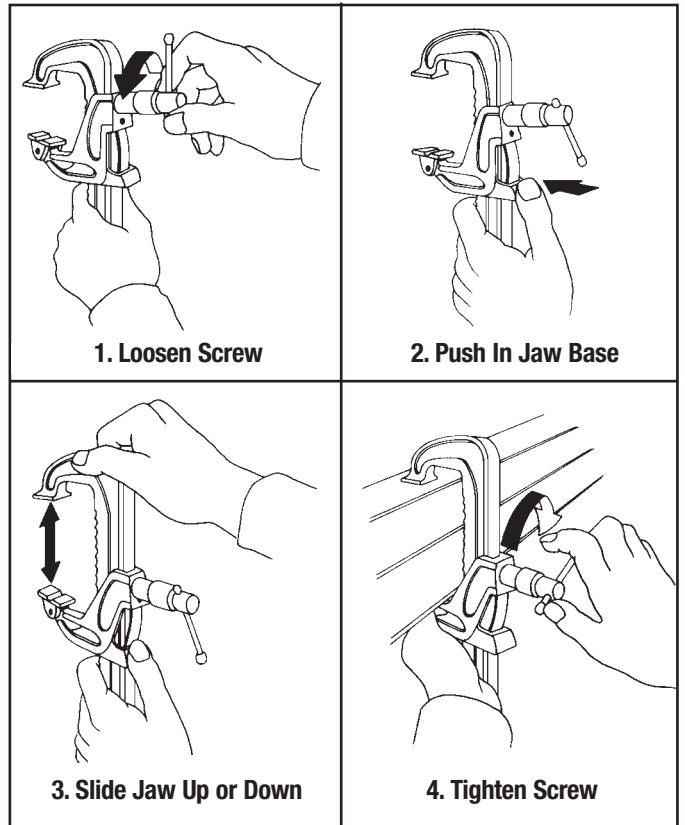
- T186** - Standard toolroom clamping, light and medium-duty welding, sheet metal work, etc.
- T321** - Identical to T186 except with deeper throat.
- T285** - Deep throat medium-duty – for special uses and awkward positions or areas.



- T290** - Medium-duty for normal machine shop work.
- T257** - Heavy-duty for extreme clamping forces or length. High tensile, heat-treated steel frame.

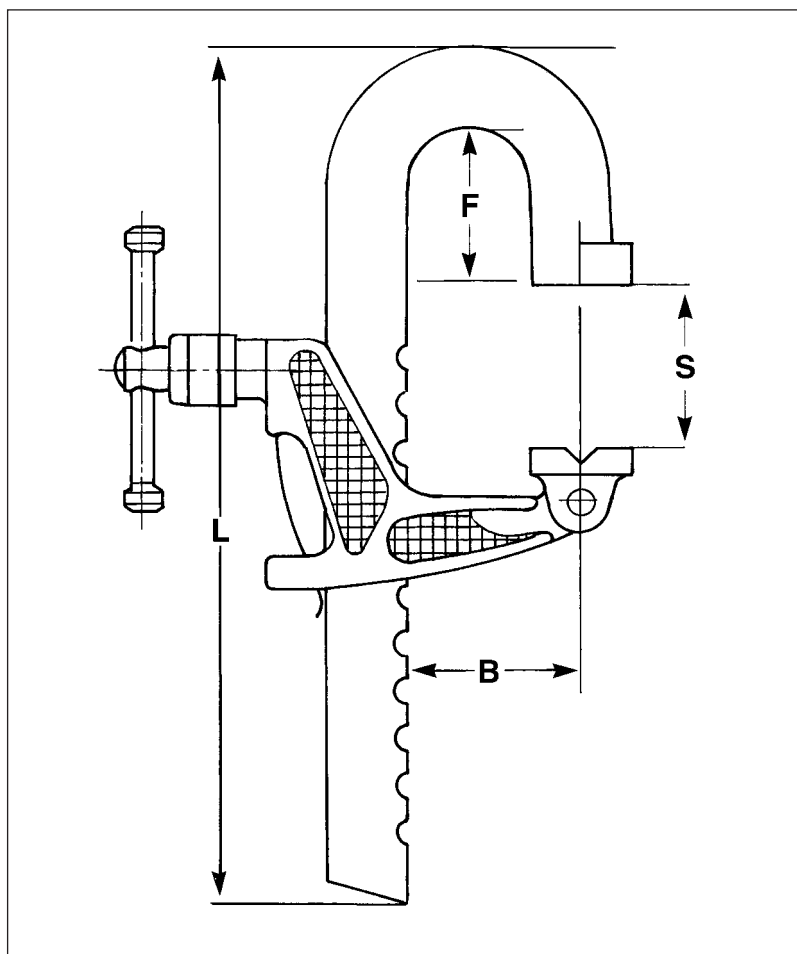
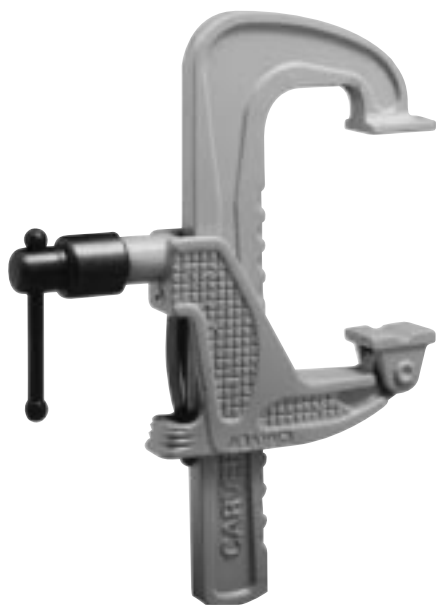
OPERATION

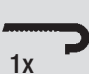

Operation is very simple. The operator slides the spring loaded moveable jaw toward the workpiece to the nearest notch where it locks into the detent. Hand tightening the screw advances the clamp jaw. The jaw advances the tilting pad directly into contact with the workpiece – there is no rotating to twist the work or the clamp out of position. An unusual and very useful feature of these clamps is the ability to use the clamp for spreading or locating as well as squeezing.



MANUAL CLAMPS

Carver "C" Style



Model No.	EDP No.	Consisting of		Holding Capacity	Weight	S (Width Opening)	B (Throat Depth)	L (Length)	F	Bar Cross Section
		1x 	1x 							
T186-6	51866	186-6-1	186-2	2500 lbs.	2.75 lbs.	0 - 6"	2.38"	9.63"	.88"	1.19 x .50"
T186-12	51812	186-12-1	186-2	2500 lbs.	3.75 lbs.	0 - 12"	2.38"	15.50"	.88"	1.19 x .50"
T321-6	53213	321-6-1	321-2	1250 lbs.	3.75 lbs.	0 - 6"	4.75"	9.63"	.88"	1.19 x .50"
T321-12	53214	321-12-1	321-2	1250 lbs.	4.25 lbs.	0 - 12"	4.75"	15.50"	.88"	1.19 x .50"
T285-9	52859	285-9-1	285-2	2000 lbs.	12.00 lbs.	0 - 9"	8.00"	16.50"	2.75"	1.56 x .81"
T285-18	52818	285-18-1	285-2	2000 lbs.	13.50 lbs.	0 - 18"	8.00"	25.50"	2.75"	1.56 x .81"
T290-9	52909	290-9-1	290-2	4000 lbs.	10.00 lbs.	0 - 9"	3.50"	16.50"	2.75"	1.56 x .81"
T290-18	52918	290-18-1	290-2	4000 lbs.	13.50 lbs.	0 - 18"	3.50"	25.50"	2.75"	1.56 x .81"
T257-6	52576	257-6-1	257-2	6000 lbs.	20.00 lbs.	0 - 6"	4.50"	13.38"	3.75"	2.00 x .88"
T257-12	52512	257-12-1	257-2	6000 lbs.	22.50 lbs.	0 - 12"	4.50"	21.50"	3.75"	2.00 x .88"
T257-18	52518	257-18-1	257-2	6000 lbs.	25.00 lbs.	0 - 18"	4.50"	27.38"	3.75"	2.00 x .88"
T257-24	52524	257-24-1	257-2	6000 lbs.	27.50 lbs.	0 - 24"	4.50"	33.50"	3.75"	2.00 x .88"
T257-36	52536	257-36-1	257-2	6000 lbs.	32.50 lbs.	0 - 36"	4.50"	45.50"	3.75"	2.00 x .88"
T257-54	52554	257-54-1	257-2	6000 lbs.	41.00 lbs.	0 - 54"	4.50"	63.50"	3.75"	2.00 x .88"