

MANUAL CLAMPS

Heavy-Duty Hold-Down Action



MODEL 515

Compact Model 515 hold-down clamp is similar in size to the Model 225. It features a very low profile. Made from C-1008 or C-1010 low carbon, cold-rolled steel with a black oxide finish. Hardened and ground pivot pins can be replaced. Forged hold-down bars can be cut or welded to suit fixturing or tooling needs.

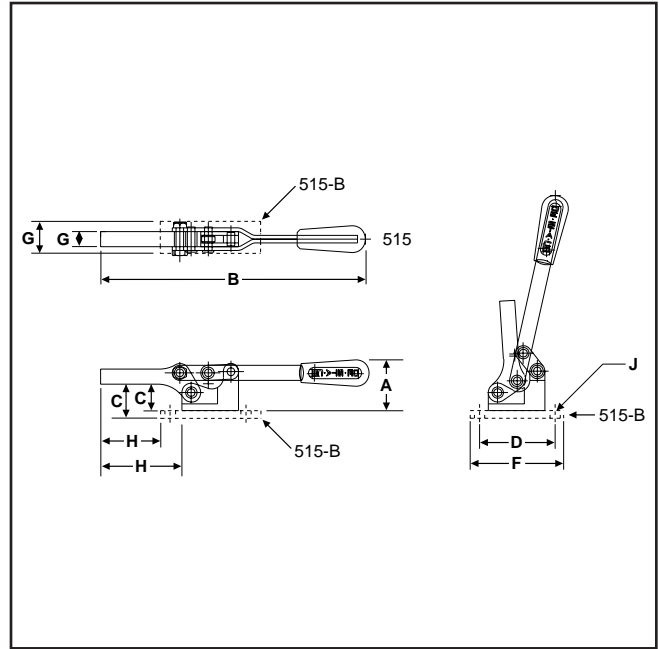
55150

Model 515
Solid Bar
Weldable Base



55151

Model 515-B
Solid Bar
Flanged Base



MODEL 516

Model 516 is the same size as Model 207-S. Made from C-1008 or C-1010 low carbon, cold-rolled steel. Black oxide finish. Hardened and ground pivot pins can be replaced. Forged hold-down bars can be cut or welded to meet a wide range of fixturing or tooling needs.

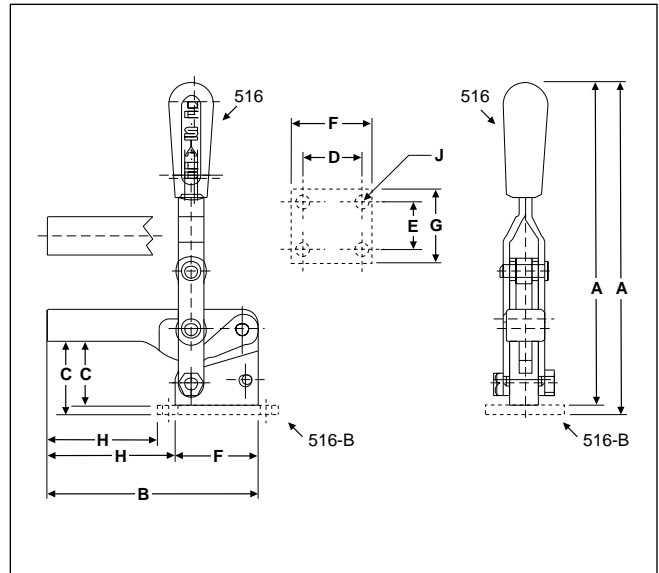
55160

Model 516
Solid Bar
Weldable Base



55161

Model 516-B
Solid Bar
Flanged Base



ALSO AVAILABLE

As Air/Hydraulic Model 846 Page 108

Model No.	EDP No.	Holding Capacity	Weight	Handle Moves	Bar Opens	Dimensions								
						A	B	C	D	E	F	G	H	J
515	55150	800 lbs.	1.07 lbs.	77°	86°	1.38	8.75	.88	—	—	1.88	.75	2.68	—
515-B	55151	800 lbs.	1.75 lbs.	77°	86°	1.62	8.75	1.12	2.50	—	3.31	1.00	2.06	.34
516	55160	750 lbs.	1.25 lbs.	66°	122°	6.31	4.13	1.25	—	—	1.63	.53	2.50	—
516-B	55161	750 lbs.	1.69 lbs.	66°	122°	6.56	4.38	1.50	1.00	1.50	2.00	2.00	2.25	.28