

# MANUAL CLAMPS

## Straight-Line Action

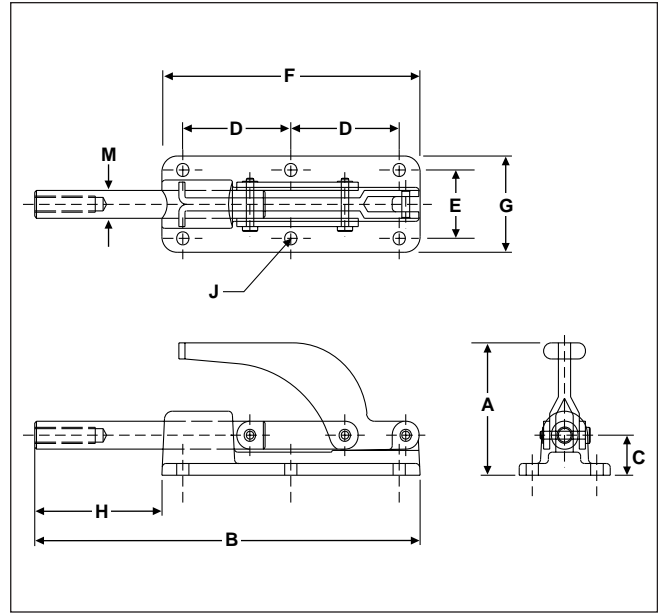


### MODEL 640

This straight-line action clamp is designed for heavy-duty service and offers a full 4" plunger travel, the longest of all the DE-STA-CO 600 Series straight-line action clamps. The 7/8" diameter plunger is drilled and tapped for a 1/2-13 adjustment spindle and locks in either the extended or retracted position. The low silhouette clamp is only 4 3/8" high for use where overhead clearance is a problem. Supplied with ergonomic handle grip. Metric Plunger available with M12 internal thread.



**56400**  
Model 6400



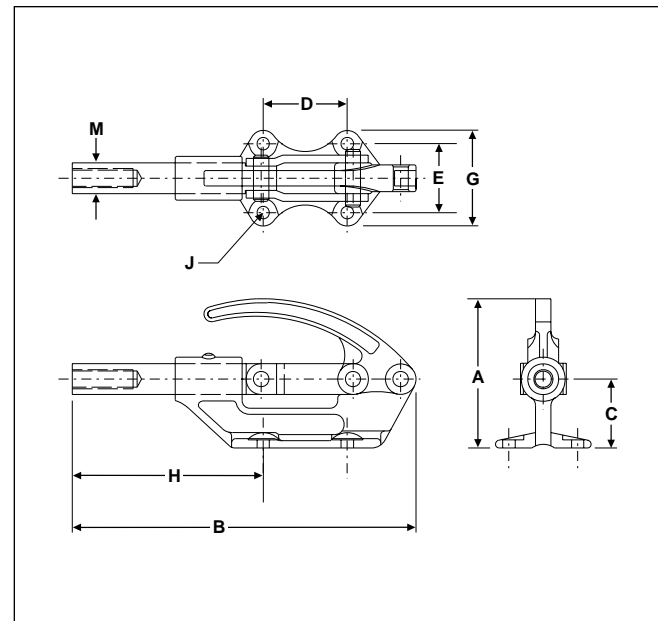
**ALSO AVAILABLE**  
With Metric Plunger Model 640-M Page 68

### MODEL 650

Largest holding capacity of the straight-line action clamps. Model 650 is precision built with forged alloy steel handle and base. Snap ring pivot pin construction allows easy removal of plunger even after unit is mounted. Locks in either the extended or retracted position. Plunger is tapped to accept any 5/8-11 spindle or detail. Metric Plunger available with M16 internal thread.



**56500**  
Model 650



**ALSO AVAILABLE**  
As Air/Hydraulic Model 850 Page 112  
With Metric Plunger Model 650-M Page 68

Model No.	EDP No.	Holding Capacity	Weight	Plunger Travel	Plunger Thread	Dimensions									
						A	B	C	D	E	F	G	H	J	M
640	56400	7500 lbs.	6.71 lbs.	4.00"	1/2-13	4.38	12.62	1.25	3.56	2.12	8.50	3.00	4.12	.41	.88
650	56500	16000 lbs.	5.59 lbs.	3.00"	5/8-11	4.88	11.25	2.25	2.75	2.25	—	3.13	6.25	.41	1.00