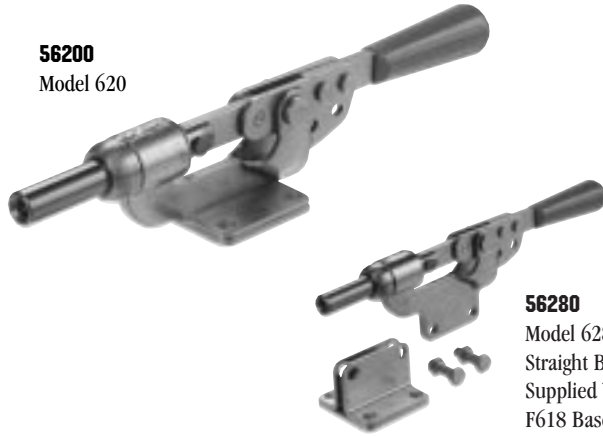


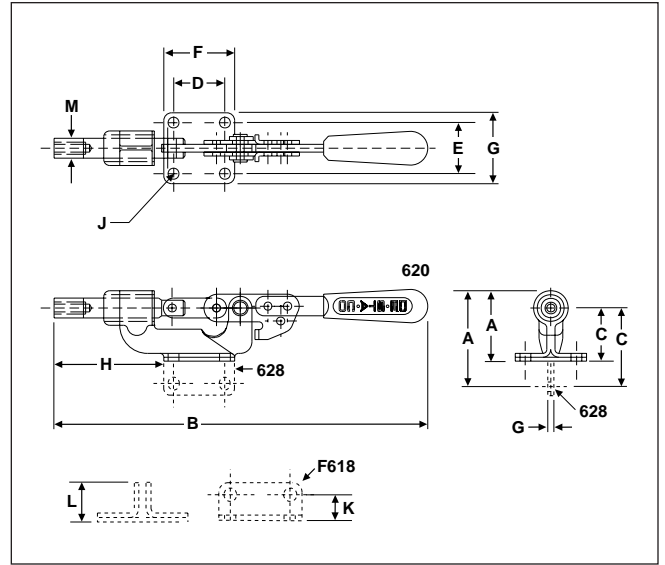
MODELS 620, 628

Features a reverse handle action. As handle moves back and down to horizontal lock position, plunger moves forward. Model 628 is identical except for straight base and removable bracket. Can be positioned for angular clamping by drilling base or may be used without base. Ergonomic handle grip included for greater operator comfort. Plunger is tapped for any 3/8-16 accessory. Metric Plunger available with M10 internal thread.



56200
Model 620

56280
Model 628
Straight Base
Supplied With
F618 Base Bracket



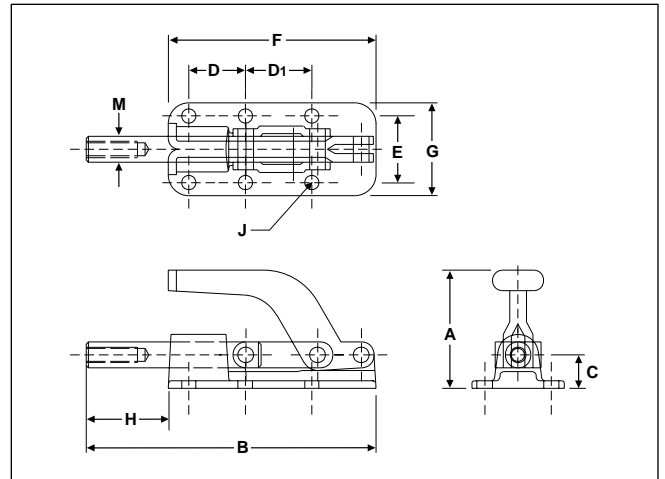
ALSO AVAILABLE
With Metric Plunger Model 620-M Page 68

MODEL 630

With a forged alloy steel base, these rugged units are designed for heavy-duty service. They offer maximum capacity for their size. The plunger (drilled and tapped for 3/8-16 accessory) locks in either the extended or retracted position. Red vinyl-dipped handle included. Metric Plunger available with M10 internal thread.



56300
Model 630



ALSO AVAILABLE
As Air/Hydraulic Model 830 Page 112
As Toggle-Lock Plus Model 630-R Page 66
With Metric Plunger Model 630-M Page 68

Model No.	EDP No.	Holding Capacity	Weight	Plunger Travel	Plunger Thread	Dimensions												
						A	B	C	D	D ₁	E	F	G	H	J	K	L	M
620	56200	600 lbs.	1.50 lbs.	1.11"	3/8-16	2.25	11.75	1.70	1.63	—	1.63	2.25	2.25	3.50	.34	—	—	.63
628	56280	600 lbs.	2.05 lbs.	1.11"	3/8-16	2.74	11.75	2.19	1.63	—	—	2.25	0.25	3.50	.34	1.30	1.63	.63
630	56300	2500 lbs.	1.90 lbs.	2.00"	3/8-16	2.88	7.06	.81	1.38	1.63	1.63	5.06	2.25	2.00	.34	—	—	.63