

MODELS 610, 618

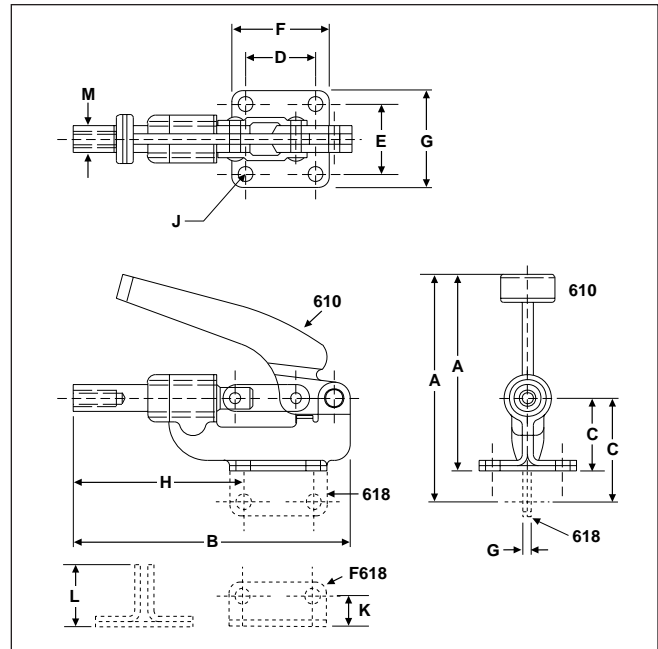
Features DE-STA-CO balanced construction for rigid holding and assured long life. Plunger tip is drilled and tapped to accept any 3/8-16 accessory. Model 618 is similar except for straight base and removable base bracket which may be positioned for varied angular clamping. Handle grip is red vinyl-dipped. Plunger locks in both the retracted and extended positions. Metric Plunger available with M10 internal thread.



56100
Model 610



56180
Model 618
Straight Base
Supplied with
F618 Base Bracket



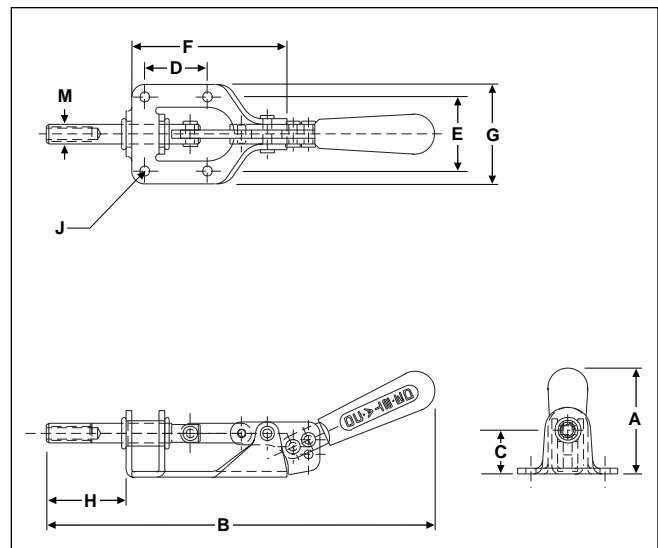
ALSO AVAILABLE
With Metric Plunger Model 610-M Page 68

MODEL 615

Similar to Model 605, except with reverse handle action. Plunger locks in the forward position only as the handle is moved downward. Ergonomic handle grip for greater operator comfort. The plunger is tapped to accept any 5/16-18 threaded accessory.



56150
Model 615



Model No.	EDP No.	Holding Capacity	Weight	Plunger Travel	Plunger Thread	Dimensions											
						A	B	C	D	E	F	G	H	J	K	L	M
610	56100	800 lbs.	1.69 lbs.	1.63"	3/8-16	4.38	6.72	1.70	1.63	1.63	2.25	2.25	4.16	.34	—	—	.63
618	56180	800 lbs.	2.01 lbs.	1.63"	3/8-16	4.85	6.72	2.17	1.63	—	2.25	0.21	4.16	.34	1.25	1.56	.63
615	56150	300 lbs.	.69 lbs.	.97"	5/16-18	2.38	8.50	.97	1.38	1.63	3.53	2.19	1.75	.22	—	—	.44