

# MANUAL CLAMPS

## Hold-Down Action



DE-STA-CO  
A DOVER RESOURCES COMPANY

### MODELS 557, 558, 560, 568

Designed for the most rugged production jobs. Handle and links are forged alloy steel, coined and machined to close tolerances. Have hardened pivot pins and serrated hardened bushings. Model 557 has a variable position straight base, and Model 560 has a 1" square optional position mounting bar similar to Model 530. Model 558 is a vertical handle variation of Model 557. Model 568 is the same as Model 558 except for the bar, which is 1 3/8" thick. All hold-down bars can be machined to meet your needs.

#### ALSO AVAILABLE

As Air/Hydraulic Model 858 Page 109



**55570**  
Model 557  
Diagonal Handle

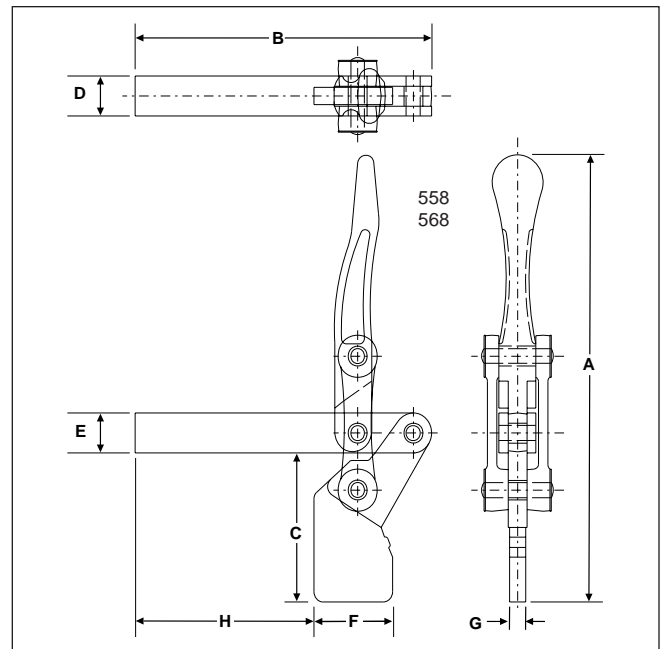
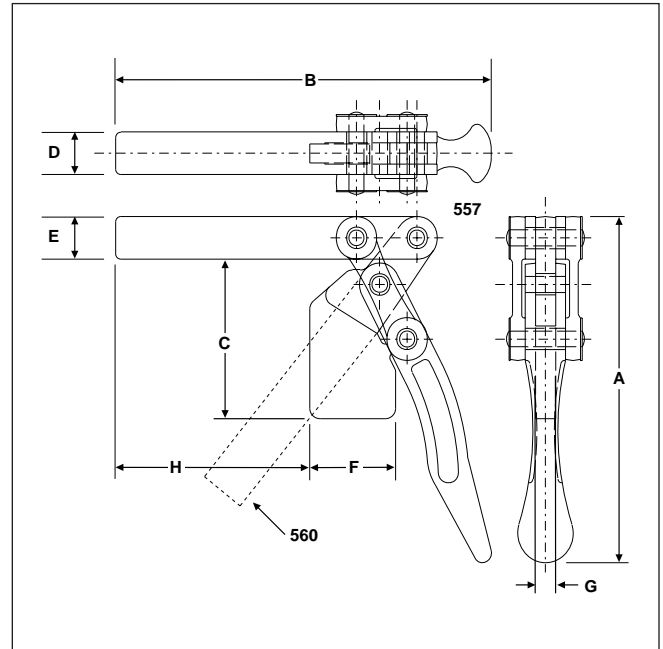
**55580**  
Model 558  
Vertical Handle



**55600**  
Model 560  
Square  
Mounting Bar



**55680**  
Model 568  
Vertical Handle



Model No.	EDP No.	Holding Capacity	Weight	Handle Moves	Bar Opens	Dimensions							
						A	B	C	D	E	F	G	H
557	55570	2500 lbs.	5.00 lbs.	64°	192°	8.13	9.31	3.75	1.00	1.00	2.13	.44	4.81
558	55580	2500 lbs.	5.00 lbs.	64°	192°	11.25	8.00	3.75	1.00	1.00	2.13	.44	4.81
560	55600	2500 lbs.	5.75 lbs.	64°	192°	8.13	9.31	—	1.00	1.00	1.00	.44	—
568	55680	4000 lbs.	5.75 lbs.	64°	192°	11.25	8.00	3.38	1.00	1.38	2.13	.44	4.81