

MANUAL CLAMPS

Hold-Down Action



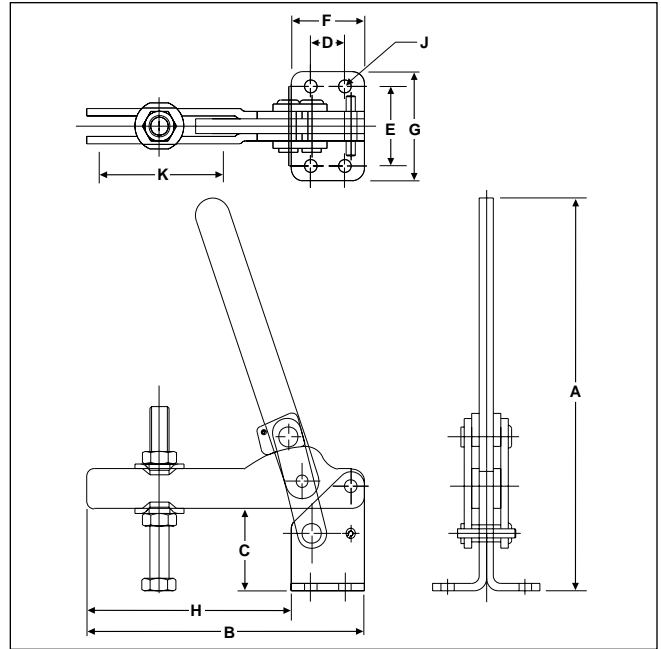
MODELS 219, 229

Featuring a unique cam action, these clamps will hold workpieces of inconsistent height. Ideal for castings or forgings, these models – once set for the nominal or average piece height – allow for a 5/32" deviation larger or smaller than average. The overall clamping range is 5/16" for Model 229 and 13/64" for Model 219. Accommodates any 1/2" spindle. Furnished with flanged washers (247109), 1/2-13 x 3 5/16 hex-head spindle, and red vinyl grip.

52190
Model 219
Open Bar
Flanged Base



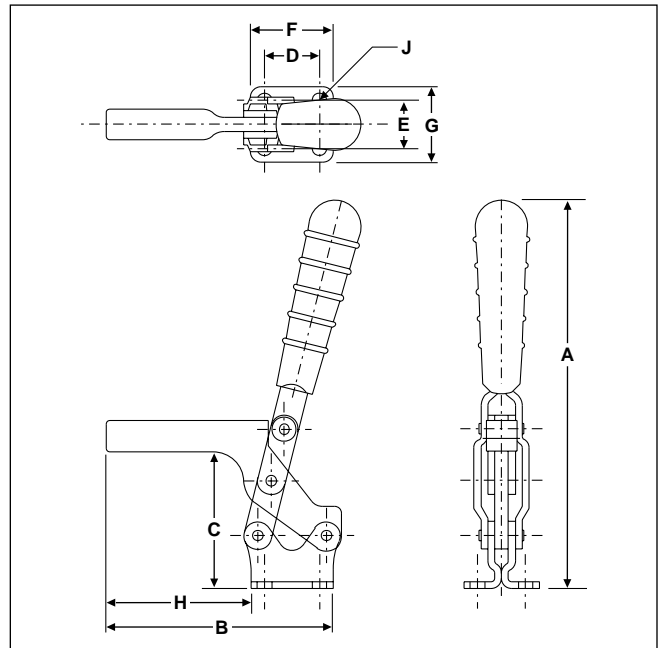
52290
Model 229
Open Bar
Flanged Base



MODEL 518

This model features a forged hold-down bar and ergonomic plastic grip. The forged hold-down bar can be cut or welded to suit the user's fixture. One of the major features of this clamp is the greater clearance under the bar. Due to the bar design, there is twice the normal clearance in this size clamp.

55180
Model 518
Solid Bar
Flanged Base



Model No.	EDP No.	Holding Capacity	Weight	Handle Moves	Bar Opens	Dimensions									
						A	B	C	D	E	F	G	H	J	K
219	52190	350 lbs.	1.75 lbs.	180°	115°	7.50	5.75	1.56	.75	1.50	1.50	2.25	4.25	.28	2.50
229	52290	1000 lbs.	2.59 lbs.	180°	115°	9.94	7.13	2.06	.88	2.00	1.88	2.75	5.25	.33	2.75
518	55180	500 lbs.	.82 lbs.	75°	90°	6.88	4.28	2.50	1.00	.88	1.50	1.38	2.63	.29	—