

MANUAL CLAMPS

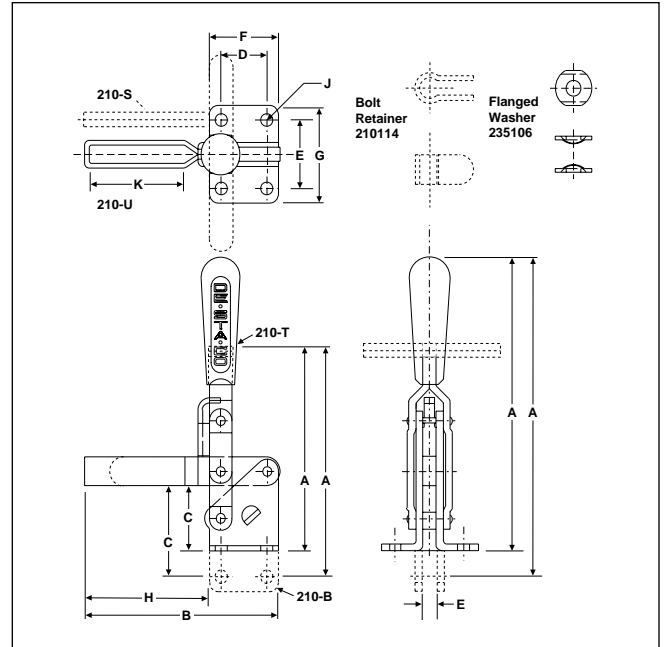
Hold-Down Action

SERIES 210

Popular because of its size and holding capacity. Ergonomic handle grips are included for greater operator comfort. Two flanged washers (235106) included with "U" bar models, and bolt retainer (210114) supplied with solid bar models. Accommodates any 3/8" spindle (not supplied). See pages 69-73 for accessories.



52100
Model 210-U
"U" Bar
Flanged Base



52101
Model 210-S
Solid Bar
Flanged Base



52106
Model 210-SB
Solid Bar
Straight Base



52103
Model 210-TS
"T" Handle
Solid Bar
Flanged Base



52107
Model 210-TSB
"T" Handle
Solid Bar
Straight Base



52102
Model 210-TU
"T" Handle
"U" Bar
Flanged Base



52110
Model 210-TUB
"T" Handle
"U" Bar
Straight Base



52105
Model 210-UB
"U" Bar
Straight Base



ALSO AVAILABLE

As Air/Hydraulic	Model 810-S	Page 108
	Model 810-U	Page 108
As Toggle-Lock Plus	Model 210-SA	Page 61
	Model 210-UA	Page 61
In Stainless Steel	Model 210-USS	Page 67

Model No.	EDP No.	Holding Capacity	Weight	Handle Moves	Bar Opens	Dimensions									
						A	B	C	D	E	F	G	H	J	K
210-S	52101	750 lbs.	1.29 lbs.	58°	106°	7.66	5.35	1.69	1.25	1.78	1.91	2.53	3.44	.33	—
210-SB	52106	750 lbs.	1.29 lbs.	58°	106°	8.16	5.35	2.19	1.25	.31	1.91	—	3.44	.33	—
210-TS	52103	750 lbs.	1.36 lbs.	58°	106°	5.38	5.35	1.69	1.25	1.78	1.91	2.53	3.44	.33	—
210-TSB	52107	750 lbs.	1.36 lbs.	58°	106°	5.88	5.35	2.19	1.25	.31	1.91	—	3.44	.33	—
210-TU	52102	600 lbs.	1.36 lbs.	58°	106°	5.38	5.35	1.69	1.25	1.78	1.91	2.53	3.44	.33	2.58
210-TUB	52110	600 lbs.	1.36 lbs.	58°	106°	5.88	5.35	2.19	1.25	.31	1.91	—	3.44	.33	2.58
210-U	52100	600 lbs.	1.29 lbs.	58°	106°	7.66	5.35	1.69	1.25	1.78	1.91	2.53	3.44	.33	2.58
210-UB	52105	600 lbs.	1.29 lbs.	58°	106°	8.16	5.35	2.19	1.25	.31	1.91	—	3.44	.33	2.58